

The background is a dark teal gradient with several bright, glowing light streaks in shades of yellow and green that curve across the frame. In the bottom right corner, there is a glowing yellow and orange sphere with a textured surface.

BARBARA HEDIGER

emotions in lights

EMOTIONS.

In broad daylight, buildings display their distinctive features. Unfortunately, specific architectural characteristics are somehow "shadowed" by nearby structures and natural daylight.

Indeed, architectural approach generally favour day time view excluding night time view.

Lighting Art enlivens buildings at night, creating a new life of its own... Emphasizing heights, bringing windows to life, colouring the dull façade stones.

It now has a totally different look, light sources acting as fictitious fountains, rivers, and constellations ...

Lighth, source of energy providing soul and magnificence.

IN LIGHTS.

We aim to reveal architectural potentials. All individual lights have a very specific purpose.

The union of darkness and light... Integrate lights to give buildings a stunning night life allowing a perfect perception of volumes, creating a dynamic effect



After qualifying as Interior Designer, I joined a lighting devices distribution company and discovered then the wonderful and unique world of light. Professional relationships with the building sector (architects, engineers and projects leaders) enabled me to get a technical and artistic approach of lighting.

My job is to create emotion. Nowadays, there are unlimited possibilities thanks to new lighting technologies.

I try to capture the designer's message or the soul of a building and render it, enhanced by new light sources, giving a new and reinforced interpretation of the architectural concept.

Go beyond the day vision. Show the architectural nightlife. Develop a new artistic and cultural nightlife approach

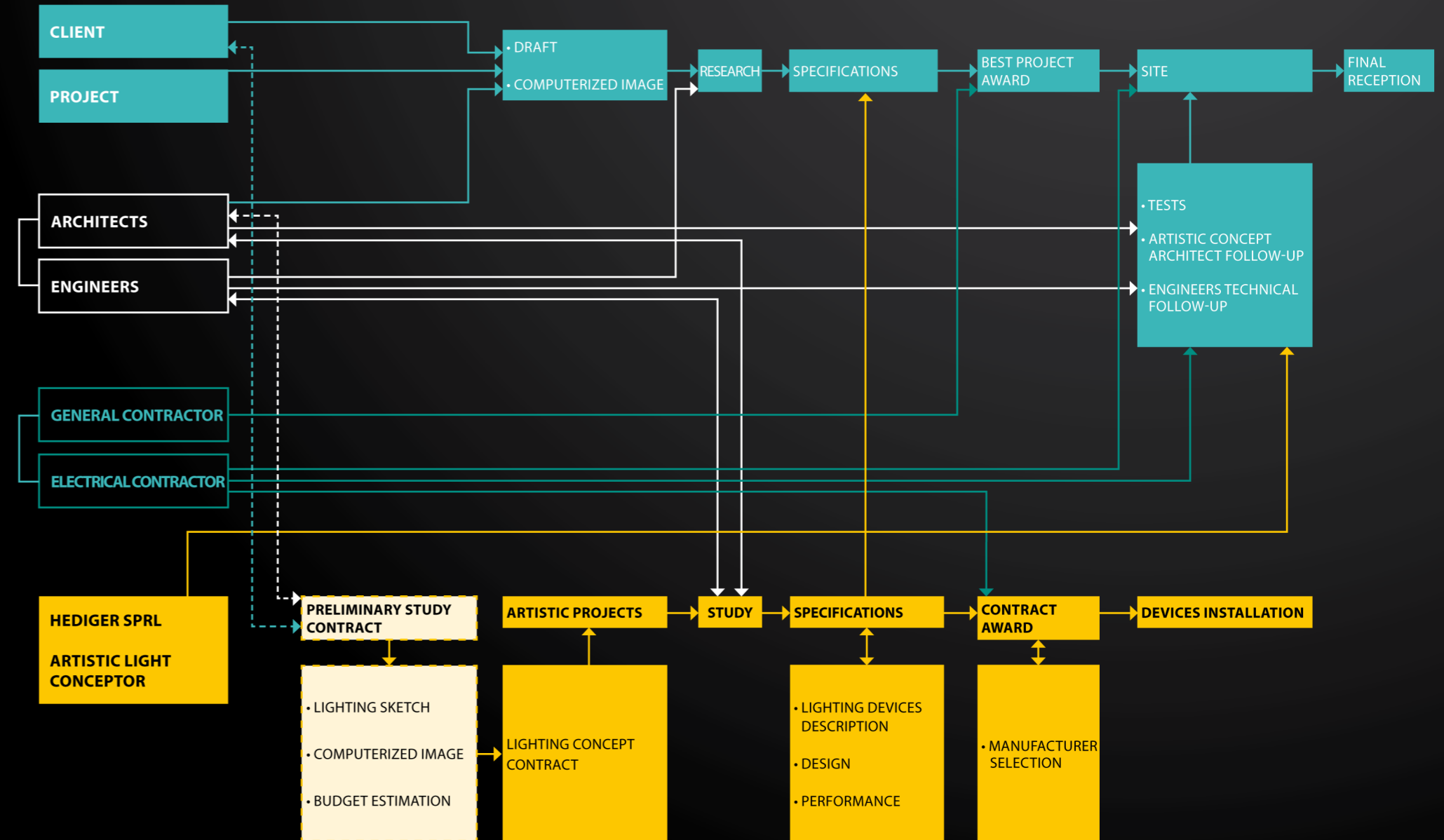
Barbara

TEAMWORK DIAGRAM.

Descriptive diagram depicting the teamwork process from conception to final stage (final customer, architects, engineers,...)

BARBARA HEDIGER

emotions in lights





©HEDIGER SPRL 2008

CRYSTAL.

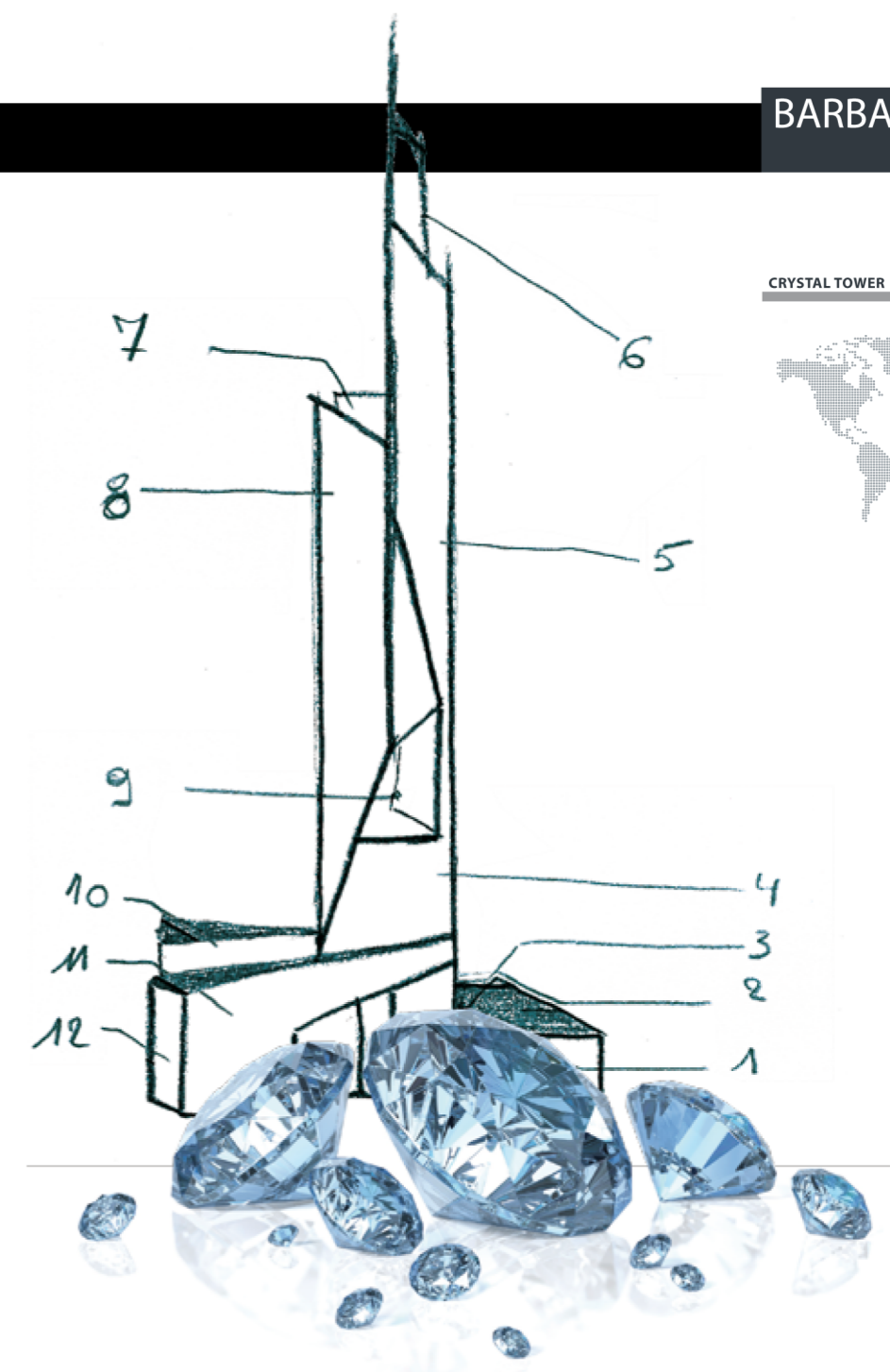
||| OBJECTIVE |||

Preliminary study

Creating a crystal-like appearance through a white spots dynamic emerging from a close observation of precious stones.
An aesthetic, artistic and technical achievement: make a sixty-storey high diamond tower revolving in an urban context simply by controlling light intensity and leds' rhythm fixed into the structure.

||| MEANS |||

Super white LED – blue LED
Light devices are fixed inside the building. Each number (see sketch) corresponds to a façade.
Each façade is computer controlled allowing either individual section lighting or simultaneous four façades lighting.



CRYSTAL TOWER | Kuwait





©HEDIGER SPRL 2008



©HEDIGER SPRL 2008

LOOKING IN THE DARK.

BARBARA HEDIGER

emotions in lights

ARRAYA TOWER | Kuwait



OBJECTIVES

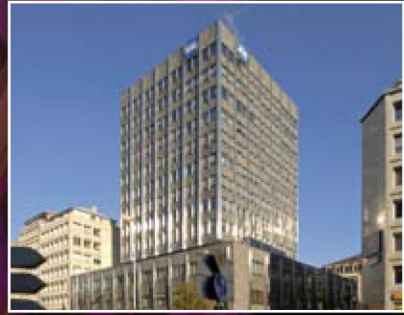
Preliminary study

The local aquatic fauna was the "trigger". This represents a fish watchful eye, its coloured stripes specific to tropical fish swimming in a blue ocean night.

MEANS

Lighting design anticipates varying light effects on stones and surfaces depending on the viewing angle. Lighting devices are to be fixed on the external façades.

EMOTIONS



©HEDIGER SPRL 2008



PASTEL HUES.

BARBARA HEDIGER

emotions in lights

KBL | Luxembourg



OBJECTIVES

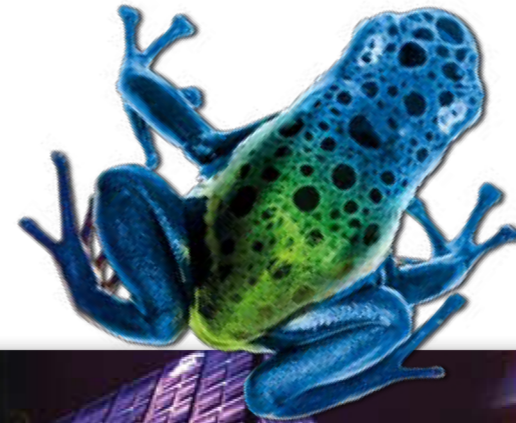
Contract completed

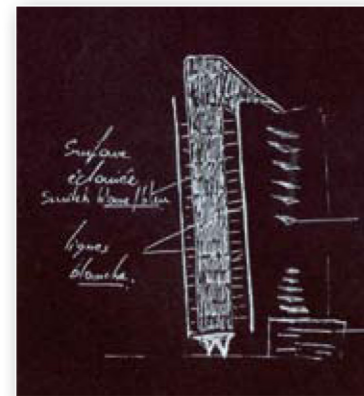
During the course of various analysis, tests and computerized trials, I noticed that luminous flux reflected on the granite façade was softened, creating a "pastel colour" effect. Light on granite : an astonishing and totally new result.

MEANS

The artistic concept : Utilise the vertical granite plates (75 x 150 cm) as reverberating pixels as LCD screens would do.

850 independent granite plates allowing for unlimited lighting possibilities. A huge multicolour patch work of colours spreading over the various dimensions, sculpting the building's forms.





©HEDIGER SPRL 2008



©HEDIGER SPRL 2008

LIGHT PARADE.

OBJECTIVES

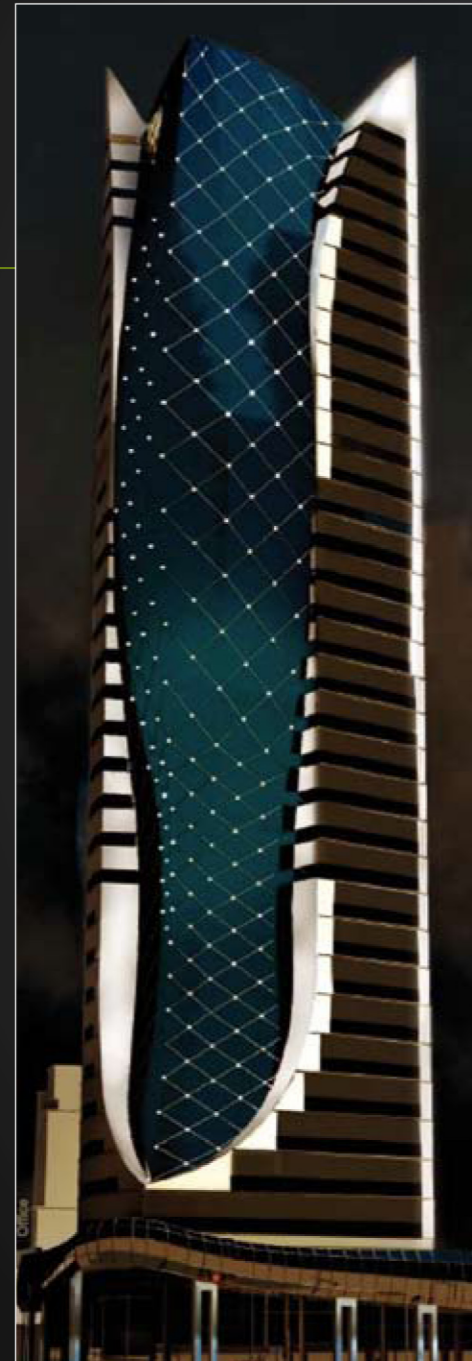
Preliminary study

Why Light Parade ?
 Architectural light parade willingly underlined by light effects providing the entire structure new dimensions... just like a musical sequence in perfect harmony with the light rhythm ... softly gliding on the building, as the air blown in a harmonica Harmony... Delicate light realism.

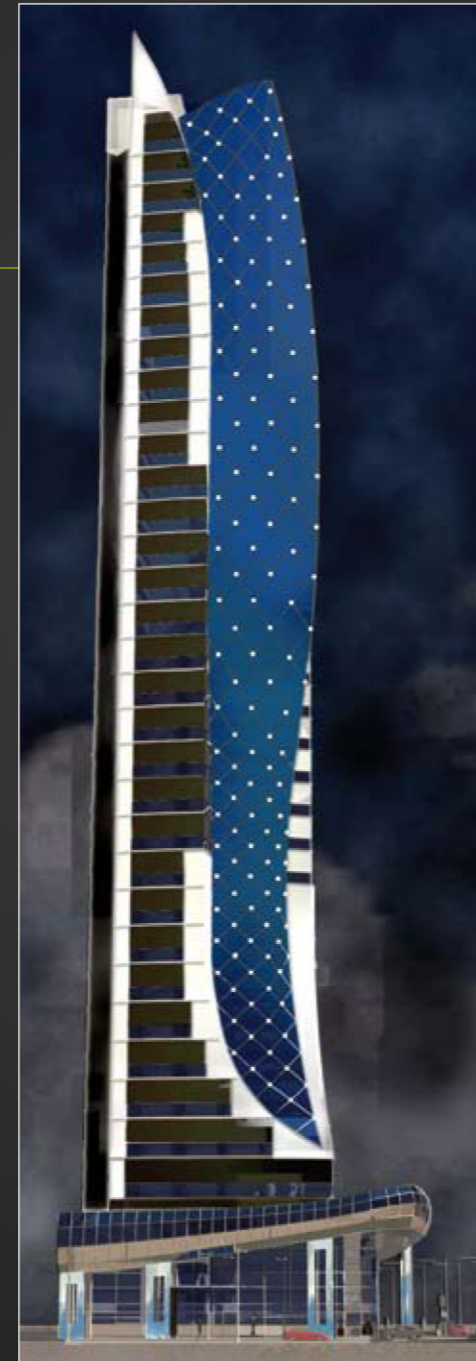
MEANS

Twinkling lights from inside out ...
 ...and a lighting game originating from the external façade.





©HEDIGER SPRL 2008



©HEDIGER SPRL 2008

FLY TO THE STARS.

BARBARA HEDIGER

emotions in lights

OBJECTIVES

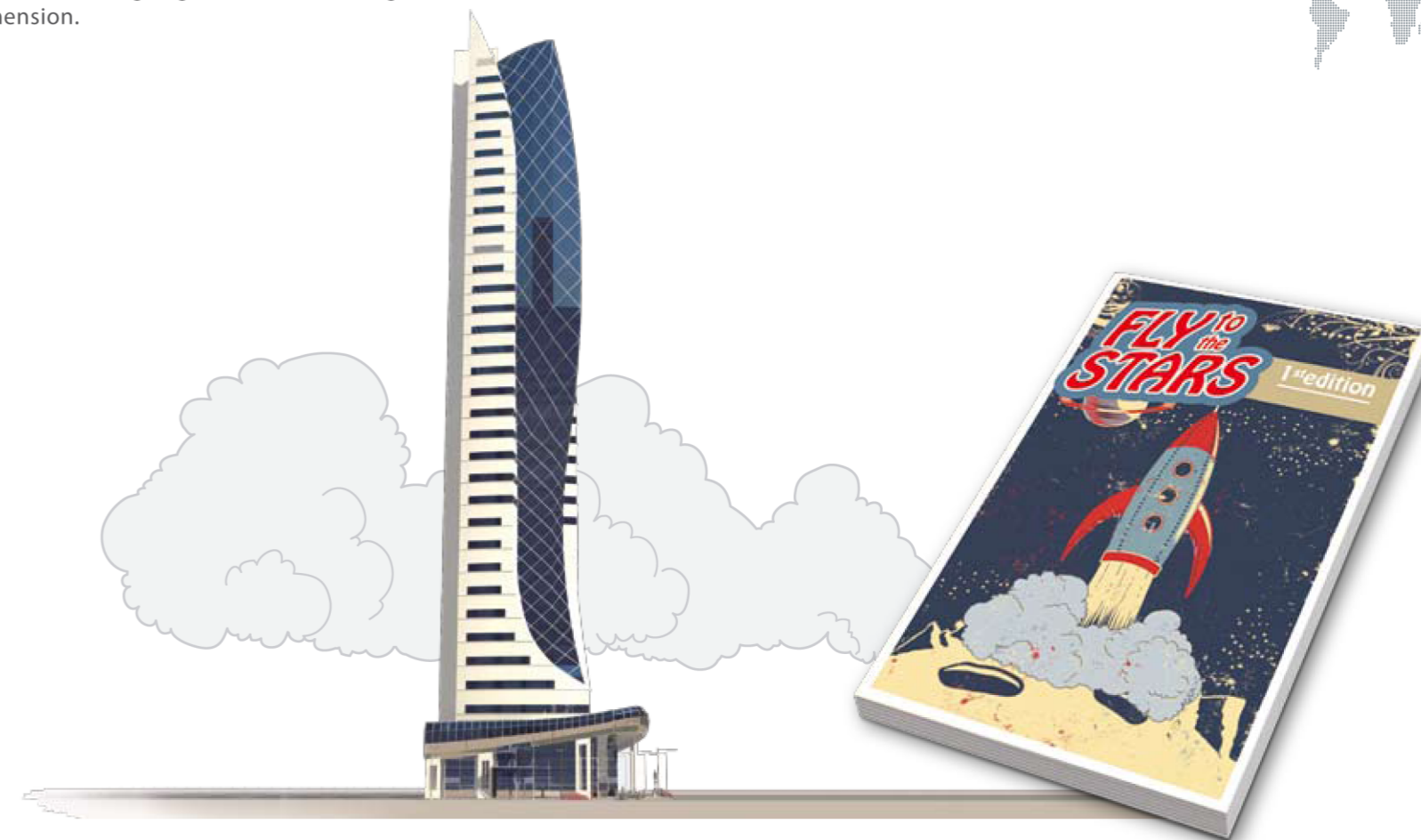
Preliminary study

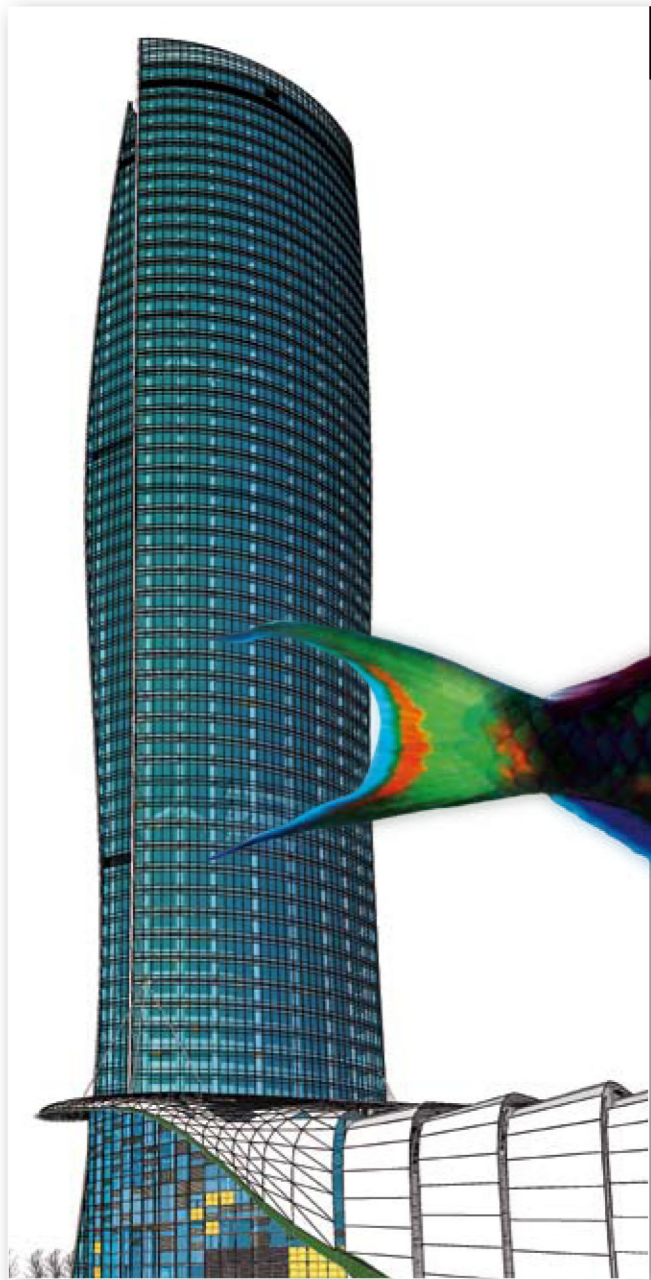
Ready for lift off, the building is on the verge of a luminous voyage. The bluish Night glass structure brings an ethereal dimension.

MEANS

Light reflection on the external facades are completed by the inner lighting sources.

KUMAI | Abu Dhabi



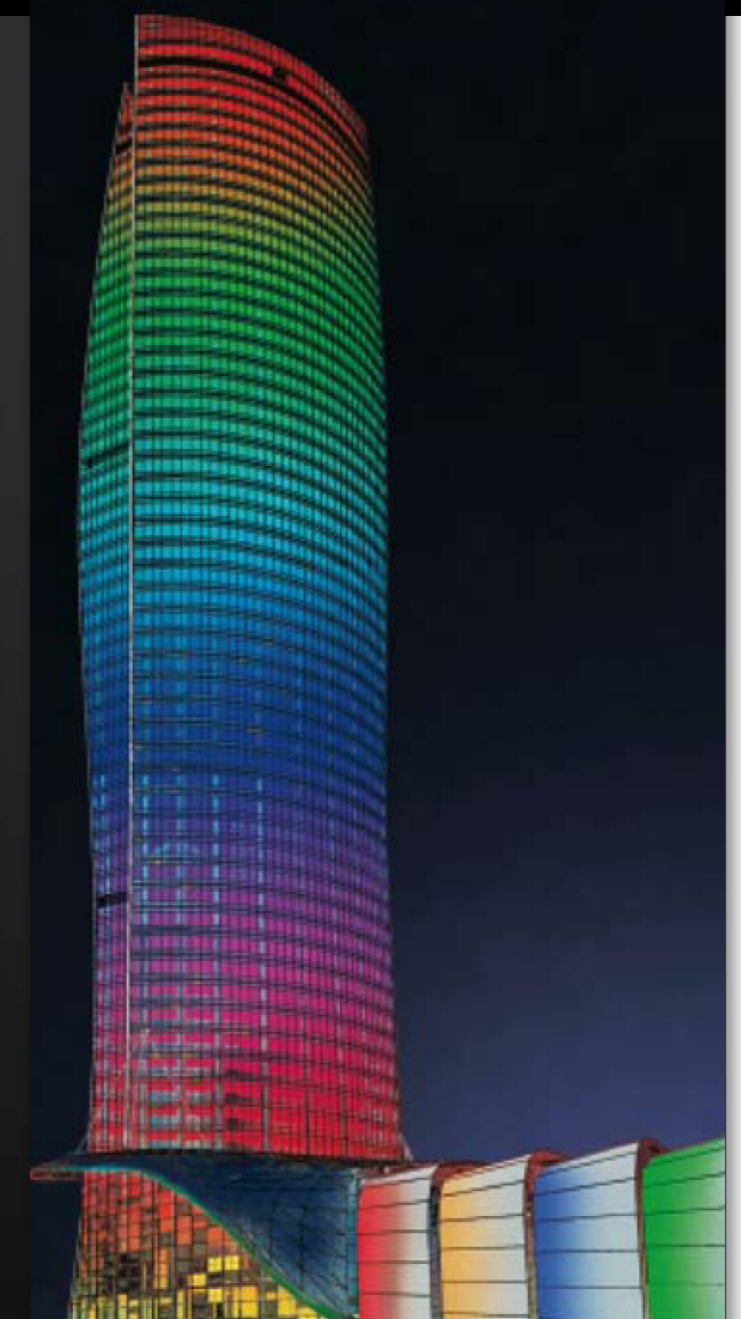


COLOURS



MYRIADS.

PRELIMINARY STUDY



BARBARA HEDIGER
emotions in lights

UNITED TOWER | Kuwait





STAR...T.



OBJECTIVES

Contract completed

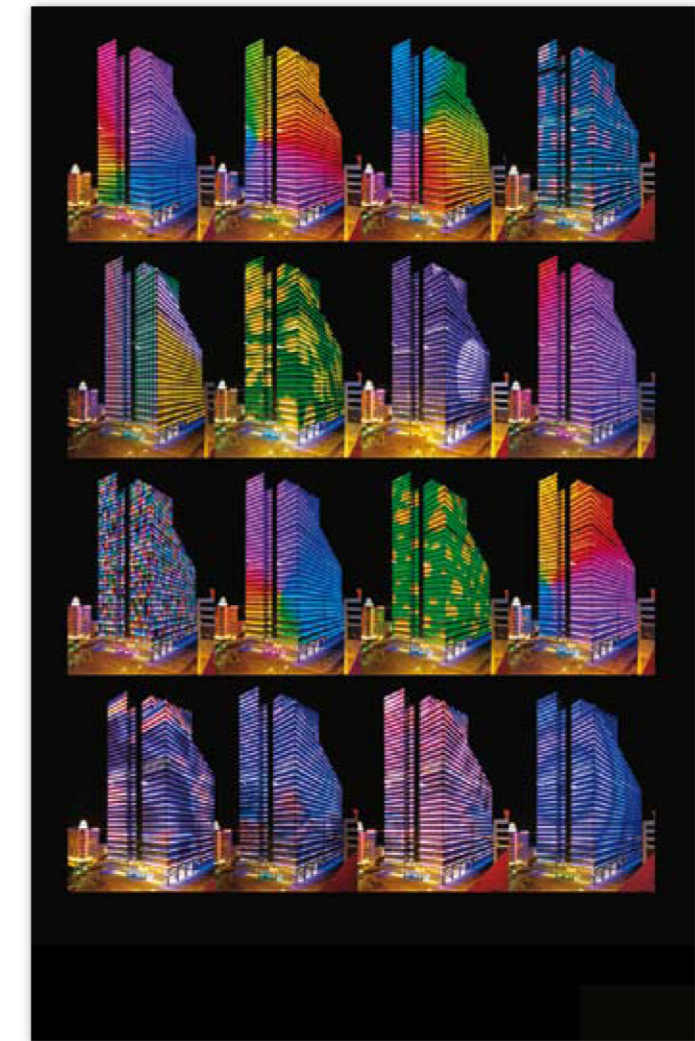
Integrated artistic lighting giving the building a stunning night life, similar to it's day life. High energy and economical performances were taken into account to focus on a remarkable light source: LED, combining high light intensity and low energy costs (up to 40% less).

The results

A dynamic and variable illumination.

MEANS

No less than 220 000 LED to create an exceptional dynamic effect establishing a milestone in architectural lighting.



DEXIA | Bruxelles



FAIR JUSTICE.

PALAIS POELAERT | Belgique



OBJECTIVES

Contract completed

Respect the building main features.
Respect the outside construction materials and stone colours .

MEANS

Selection of warm colours, choice of lights beams for each column.



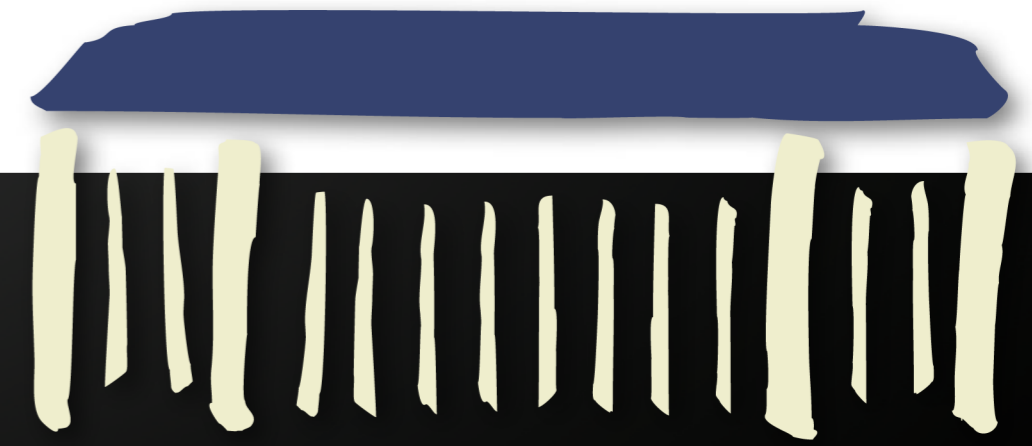
©HEDIGER SPRL 2008



©HEDIGER SPRL 2008



©HEDIGER SPRL 2008





CATHEDRAL SERENITY.

ST AUBAIN | Belgique



OBJECTIVES

Contract completed
The light at the service of this beautifully designed architecture.
Artificial light doing justice to natural light.

MEANS

90 % of the light sources is well hidden invisibly.





BLUE WINGED.

BARBARA HEDIGER

emotions in lights

STATION SERVICE | Belgique



OBJECTIVES

Preliminary study

A light and delicate architecture. Blue colour is a reminder of the structure and building material.

MEANS

Same colour spectrum for unreal dimension and aerial aspect. Light effects are irradiating from the inner structure.

HEDIGER OFFICE TASKS.

BARBARA HEDIGER

emotions in lights

Detailed analysis of drawings with architects on site

Initial evaluation of technical proposals with architects . Visit on site if required

WORK COMPLETED AT HEDIGER OFFICE

- Preparation of plans required for concept implementation based on materials submitted by the architectural firm
- Establishing and budget control of lighting up of the concept, which is the subject of this mission
- Analysis of products to be installed : dimension, fixing systems, technology, power and design of the devices
- Selection of light sources, colours to be used according to different locations and end use
- Precise indication to secure the lighting devices onto the building
- Estimation of cost for light devices, excluding the installation prices of the devices and prices of the electric wiring
- Estimation of the installed power
- Computer generated image

PRODUCTS SEARCH

- Investigate various manufacturing sources for best offer, quality and services for the project
- The client shall be informed of our investigations

VISIT ON SITE

- Proposal to architects for changes required for installation
- Collaboration with HVAC engineers for securing electrical power source to luminaries
- Presentation to client and architect of lighting concept

MISSION FOLLOW-UP

- Drawing of luminaries on plans
- Drawing of luminaries in detail
- Drawing of luminaries on cross sections
- Description of luminaries for price requests from manufacturers
- Drawing data sheets for each luminary
- Analysis of the product to develop:
 - dimension
 - fixing systems
 - technology
 - power
 - design of the device
- Specifications will be developed to secure the best prices from manufacturers

ADDITIONAL FOLLOW-UP

- During the lighting tests, the contractor will fully allow access to the entire lighting equipment and qualified staff to carry out these tests
- Tests lighting on site with the selected product prior to production of the devices.
- Establish standard tests procedure will be prepared by HEDIGER office
- Lighting devices will be provided by the manufacturer

WORK TIMETABLE

- Timetable study by HEDIGER office to be determined
- Production planning for all luminaries to be determined
- Planning for laying depending on planning of the construction site
- Project schedule to be determined

EXCLUDED TASKS

- Drawing of the wiring plans.
- Design of the electrical switchboards
- Follow-up of connecting electrical wiring is the responsibility of the engineers of the site
- HEDIGER office will not be responsible neither for equipment quality, nor for software quality
- Show of colours will be submitted to a graphic designer at the customer's choice
- Design of the entire wiring and other required facilities is the responsibility of the Special Techniques Department
- Any procedures and follow-up aiming to secure permits to accomplish the lighting concept
- Cost for intermediate reports concerning temporary projects acceptance
- Establishment and provision of plans as "build" of the illumination system
- Fees for the establishment of another lighting concept
- Fees for adapting the concept following materials, as demanded by the architect and the client
- Travels and accommodation

The services fees necessary for the implementation of techniques that require travel to factories or study offices abroad will be included in a summary table. They will be charged to the client in addition to the fees specified below, and provided that such invoices have been previously approved in writing by the client.

THE INFORMATION SUPPLIED BY HEDIGER OFFICE WILL BE BASED ON

- Architectural plans
- Engineers requirements
- Detailed plans of all standard and special windows
- Section plans for each floor if require

FEES.

Will be as follows :

FIXED FEES

The Hediger Office in return for carrying out its mission, will set fixed fees and expenses.
VAT will be at the client expense

EXCLUDED TASKS

Additional lighting studies performed outside the framework of the main project
Supplementary technical follow-up
Fixing installation follow-up and lighting tests

PAYMENT TERMS

Fees will be payable as follows :

- 40 % on order
- 30 % on lighting concept presentation
- 30 % on descriptive electrical devices presentation

Excluded Tasks costs will be invoiced monthly

Invoices are payable within 30 calendar days from date of receipt – on Fortis Bank account n° 001-4465641-31 – IBAN : BE 04 0014 4656 4131 – BIC : GEBABEBB

Any overdue payment will automatically produce a 1% monthly interest rate without any prior warning

BARBARA HEDIGER

emotions in lights

EMOTION IS LIFE. EMOTION IS LIGHT.

Nights enhance lights.

Lighting make dreams a reality by combining artistic look, technical and technological accomplishments

The 3 golden rules of the HEDIGER office :

- The right lighting must consider people living with their "light environment"
- The right lighting takes the costs of energy and maintenance into account
- The right lighting must be integrated with harmony





BARBARA HEDIGER

emotions in lights

Made in Belgium

Rue de Velaine 86
5060 Sambreville - BELGIUM

Tel. +32 (0) 71 74 20 82
Fax +32 (0) 71 74 19 83

www.hediger.be
barbara.hediger@hediger.be